

# The IRI Voracity & erwin Data Intelligence Suite Platform Combination

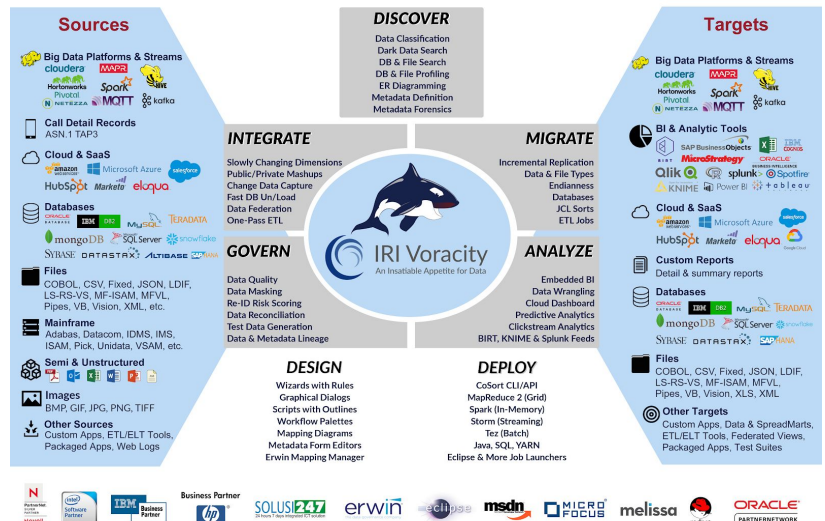
*Total Data and Metadata Management for the Modern Enterprise*

## Benefit Summary

The developers behind the best-in-class data management (IRI) and metadata management (erwin) software have bridged their technology stacks to give modern organizations a single, integrated solution for their:

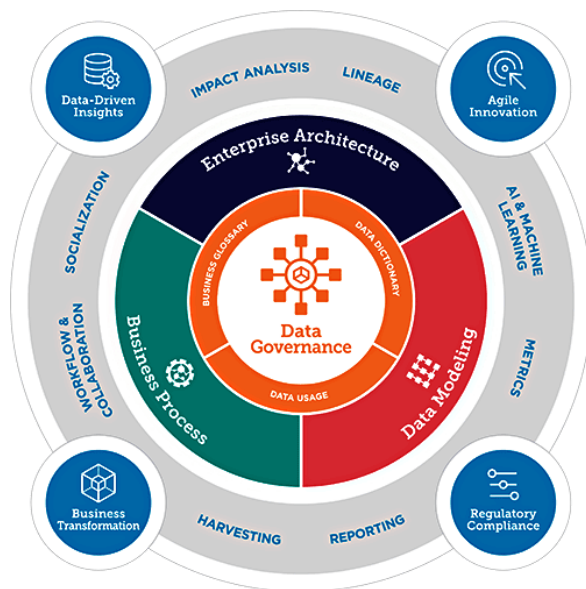
- **Data Integration Teams** who want affordable, lightning-fast big data and ETL processing, *plus* mapping management, metadata-driven automation, and automated conversion of legacy ETL jobs.
- **Business Users** who need embedded BI or fast data blending for analytics, *plus* release management for their reporting or data preparation/ETL jobs.
- **Regulatory & Compliance Officers** who require versatile data masking and robust test data generation, *plus* proactive PII discovery, and automated test case management and validation.
- **Governance & Information Architects** who expect multiple data acquisition and job design options, *plus* identity access and workflow management, metadata lineage, and impact analysis.

IRI Voracity is the data integration industry's fastest, and most affordable, modern ETL and data curation platform. Voracity supports data discovery, integration, migration, governance, *and* analytics in Eclipse. Voracity uses CoSort or Hadoop engines interchangeably for speed in volume, and is a shareable solution stack for BI/DW architects, DBAs, developers, and compliance officers who want to overcome the performance, functional, design, and financial challenges around EDW, data mining, data protection, and testing inherent in legacy ETL and specialty tools.



Thanks to API-level integration between Voracity and the erwin Data Intelligence Suite, users of either environment can now have cloud-based governance, mapping management, legacy ETL job conversion, and metadata driven automation. Together these stacks automate, accelerate, standardize, and govern all phases of the data integration lifecycle, and increase efficiency, collaboration, and data quality for IT and business users who work with metadata. And they do it more cost effectively than any other system.





## METADATA MANAGEMENT & GOVERNANCE

When used with IRI Voracity, erwin Data Intelligence Suite modules deliver superior metadata management for data warehouse, data governance, and related data lifecycle management operations. Together, the platforms can scan, consolidate, manage, and exploit data and metadata across the organization.

The industry's first patented "pre-ETL" enterprise data mapping solution helps users achieve regulatory compliance via comprehensive governance, data lineage and impact analysis features. Scan, consolidate, and govern metadata across the organization in a collaborative environment.

## BUSINESS GLOSSARY

Create, manage, and collaborate on a common business vocabulary across the organization. Support regulatory compliance, data governance, and data stewardship initiatives by defining business terms and building lineage maps that show semantic definitions related to physical data dictionaries, data mappings, lineage of federated data, and other business artifacts such as requirements, test cases, and more.

- Manage vocabulary terms and owners
- Build end-to-end lineage and relationship views with meaningful business terms
- Automate discovery of relationships to quickly link semantic business glossary definitions to policy, physical data dictionaries, functional requirements, mappings, test cases, Voracity data classes, etc.

## REQUIREMENTS MANAGEMENT

- Manage requirements and specification documents from an enterprise platform
- Link requirements to mappings, test cases, business processes, and owners
- Generate enterprise-wide traceability matrix between requirements, mappings, test cases, and business glossaries

## CODESET & REFERENCE DATA MANAGEMENT

- Scan, manage, validate, and govern code-sets and reference data across the organization
- Link code-sets to ETL mappings and processes
- Publish valid code values to dev, test, and production environments
- Govern user-defined reference data and code-sets, and link to requirements and data mappings

## TEST CASE AUTOMATION MANAGEMENT

- Reduce test cycles and costs by auto-generating reusable test SQL, mapping, and ETL/ELT process cases, and automating execution and population of test results for source-to-target mappings and metadata
- Consolidate test management through the documentation of test cases, test steps, test SQL, and test results
- Enable test case and test SQL generation in a purpose-built module for testing data mappings and ETL processes
- Integrates with IRI RowGen test data synthesis and ETL task preview features within IRI Voracity



## DATA QUALITY

Profile, Report and Score Data Elements

- Profile data where it lives
- Schedule profiling against all repositories for regular update of the data profile, pattern analysis and scoring.
- No heavy lifting, and can be operated by Business Data Stewards and Data Analysts alike.

## RELEASE MANAGEMENT

- Create, validate, and map releases, along with all release artifacts, such as Voracity ETL jobs
- Leverage integrated workflow and approvals
- Generate release plans
- Manage release calendars with yearly, monthly, weekly and daily views
- Promote mappings between environments automatically

## SENSITIVE DATA DISCOVERY

- Define, score, and locate PII according to rules
- Use built-in IRI FieldShield functions in Voracity to mask PII discovered through integrated data classification and multiple search methods

## METADATA-DRIVEN MAPPING MANAGEMENT

- Use the data integration industry's first patented "Pre-ETL" source-to-target data mapping solution
- Manage mapping versions and changes
- View data lineage and impact analysis, and meet the compliance objectives of industry regulators

## AUTOMATION AND CODE GENERATION

Use built-in SDKs to customize code generation for specific requirements, template driven ETL standardization and automation, or auto-documentation of procedural code, and view data lineage. Use the automation framework, and repeatable processes and solutions, to minimize manual tasks, accelerate delivery, and reduce rework.

## ETL & ELT AUTOMATION

- Generate Voracity ETL code using a truly metadata-driven approach
- Standardize ETL job design patterns for Voracity and other ETL tools based on your standards and best practices
- Reverse engineer ETL jobs into mapping documents, and publish transformation logic
- Reverse engineer legacy code and SQL procedures, shell scripts, COBOL and Java programs, and much more with erwin Smart Data Connectors

## DATA VAULT AUTOMATION

Pre-built and custom Data Vault Smart Data Connectors (erwin Automation) approved by Dan Linstedt automate code-generation for the Data Vault Rapid EDW methodology for Stage, HUB, LINK, Satellites and Data Marts. Building Data Vaults, Business Vaults, and Data Marts has never been faster. Use Data Vault Automation bundles to generate:

- Data Vault Hub, Link, Satellite, PIT, and Bridge code generation for almost all tools and scripts
- Data Vault Table Structures
- Data Vault data mappings in Mapping Manager
- Data Vault ETL Processes
- Data Vault DBMS Views
- Data Vault test cases and test SQL

In addition, Voracity provides wizards to automate the migration of relational database schema to, and populate of business-key correct test data in, Data Vault 2.0 models.



## Other

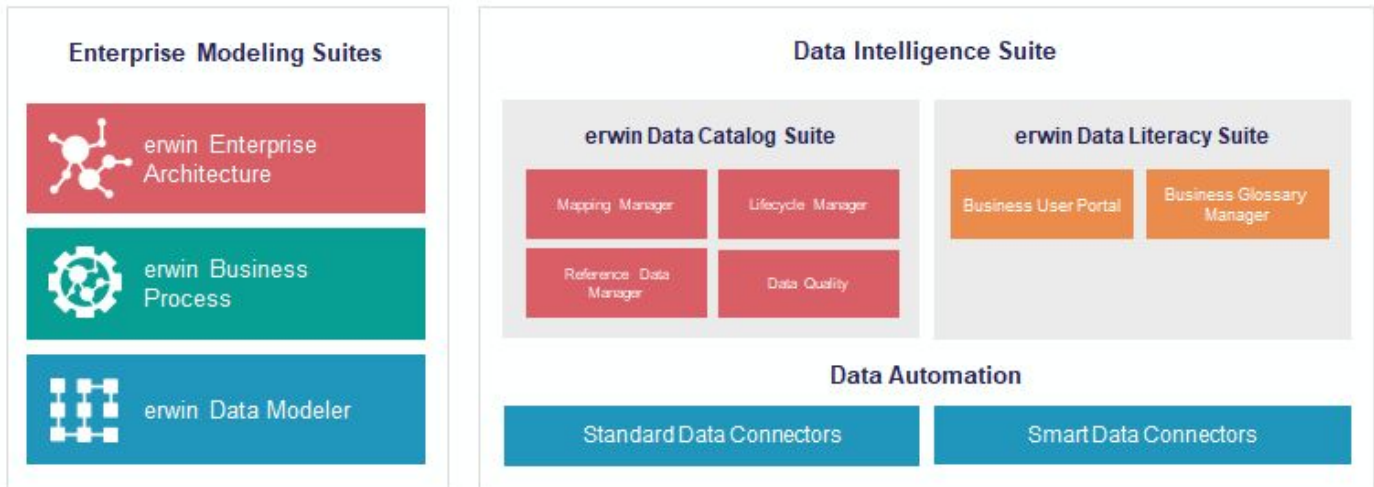
- Generate & auto-document SQL code and stored procedures
- Auto-document Voracity, Visual Basic, COBOL, Java, and other code, and view lineage
- Generate DDLs from metadata to build data warehouses and data marts
- Create templates to connect to homegrown solutions



## COMPONENT REFERENCE MODEL

The Enterprise Data Intelligence Suite of modules also accelerates delivery and governs IRI jobs and other software development lifecycle (SDLC) processes in Voracity's Eclipse GUI, IRI Workbench.

# erwin Enterprise Modeling & Data Intelligence Software



## Getting Started

The IRI Voracity data management and erwin Data Intelligence Suite together address all phases of the data integration and governance lifecycles. Their flexible licensing models allow you to choose only the components you need to meet your specific goals.

If you already use a legacy ETL tool, data governance system, or other data-centric software product, tell IRI and erwin what it is, and ask about a Pilot around automatic re-platforming as you assess your ROI. We will be happy to help you understand the technical aspects of legacy tool conversion and how much money you will save.

## Contact Us

### Phone

IRI: 1-800-333-SORT

erwin: 1-800-78-erwin

### Email

info@iri.com

info@erwin.com

### Web

www.iri.com

www.erwin.com

